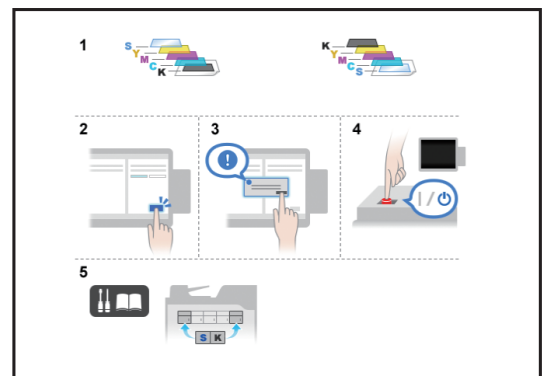
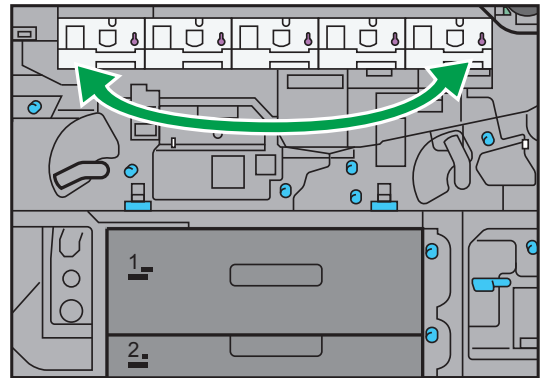


# CIP Training

Pro C7200 series

## 5th Station Position

**RICOH**  
imagine. change.



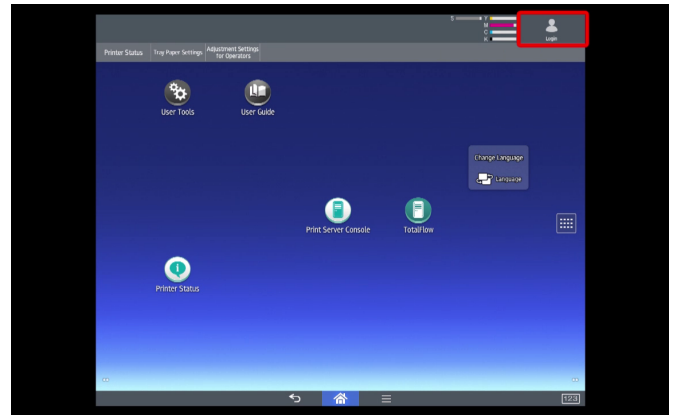


# CIP Training Pro C7200 series

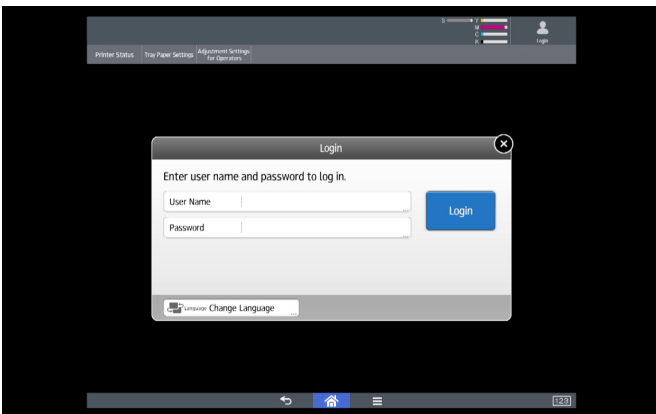
## 5th Colour Position



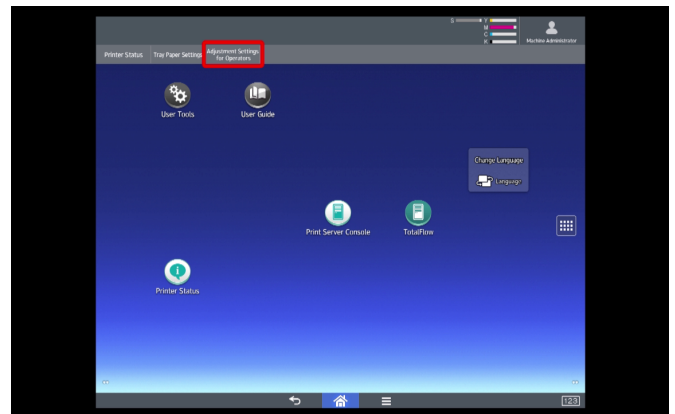
1. Power on machine.



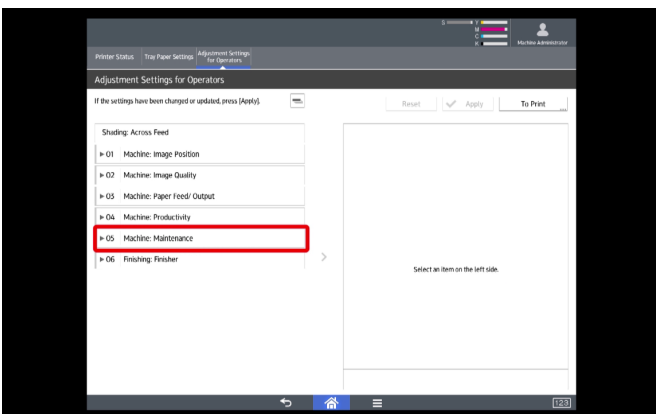
2. Select "Login".



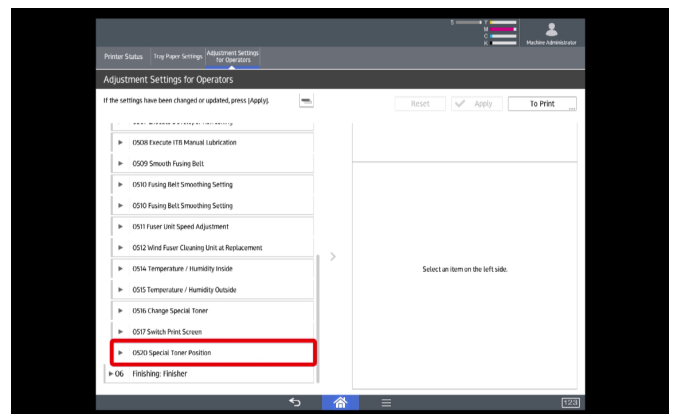
3. Login as Administrator.



4. Select "Adjustment Settings for Operators".



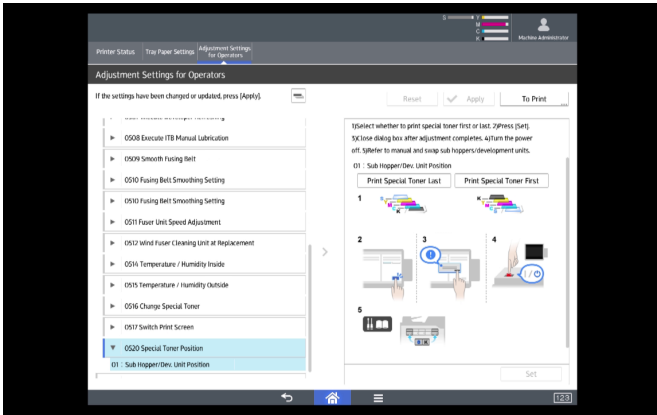
5. Select "05 Machine Maintenance".



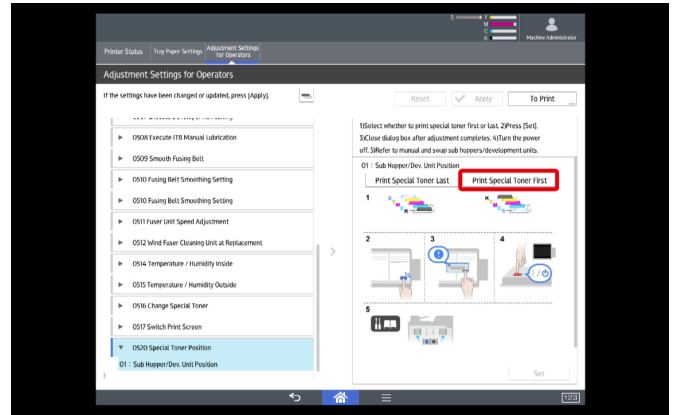
6. Select "0520 Special Toner Position".

# CIP Training Pro C7200 series

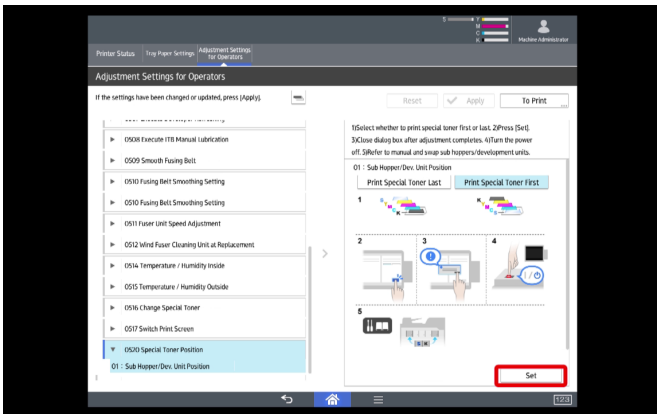
## 5th Colour Position



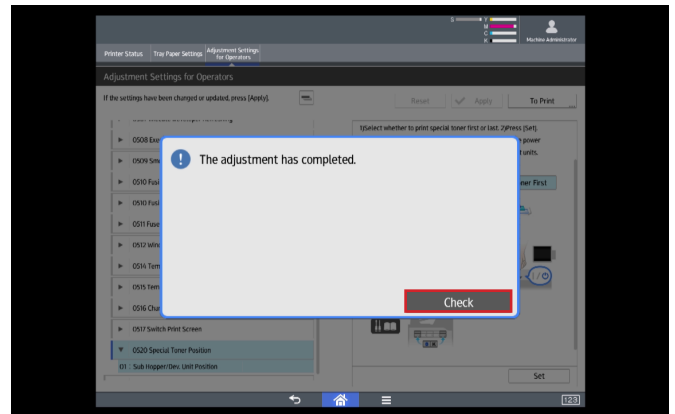
7. Select "01 Sub Hopper/Dev. Unit Position."



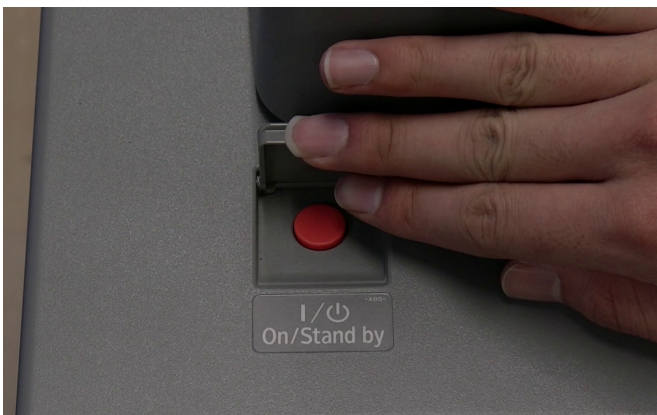
8. Select "Print Special Toner First".



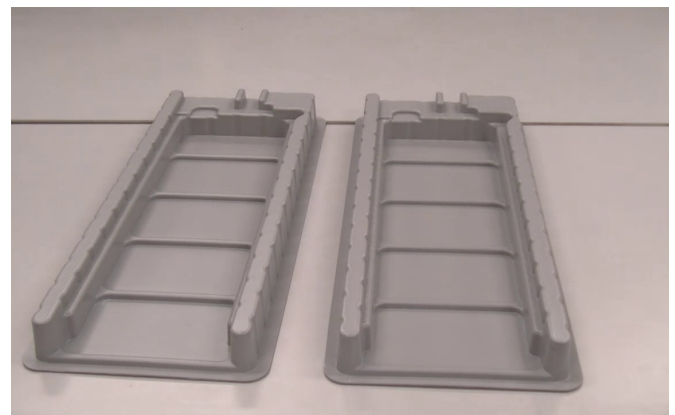
9. Select "Set".



10. Select "Check" once adjustment has been completed.



11. Turn Power OFF.



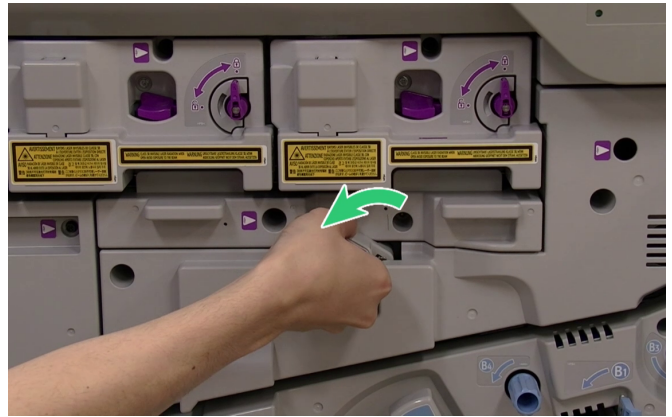
12. Prepare trays for Drum Assembly Units.

# CIP Training Pro C7200 series

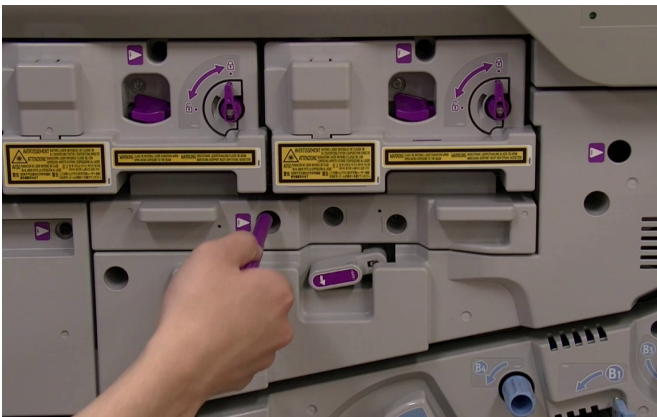
## 5th Colour Position



13. Open front covers.



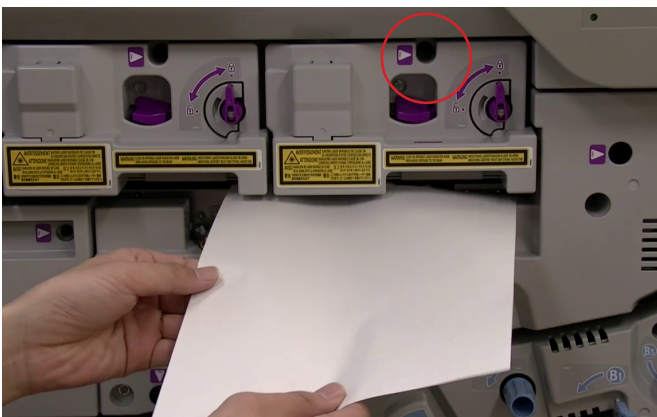
14. Turn "\*" lever" to left.



15. Remove screw as pictured.



16. Remove "cover plate".



17. Place sheet of paper under Drum assembly and remove screw (circled).



18. Press on release button and pull out drum assembly.

# CIP Training Pro C7200 series

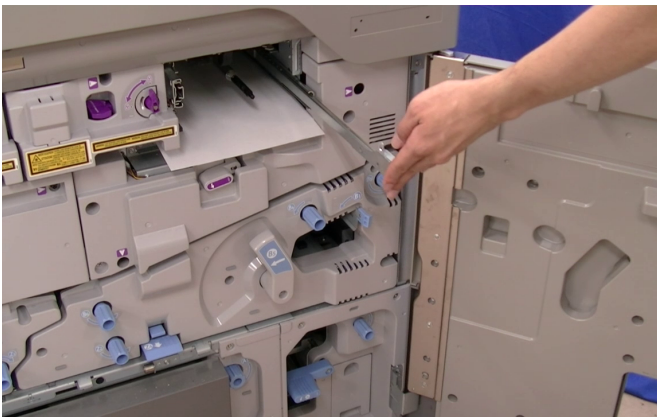
## 5th Colour Position



19. You may need to remove front locking screw and then carefully remove K drum assembly from rails.



20. Place in Tray.



21. Carefully slide rails back.



22. Place sheet of paper under White Drum assembly and remove screw (circled).



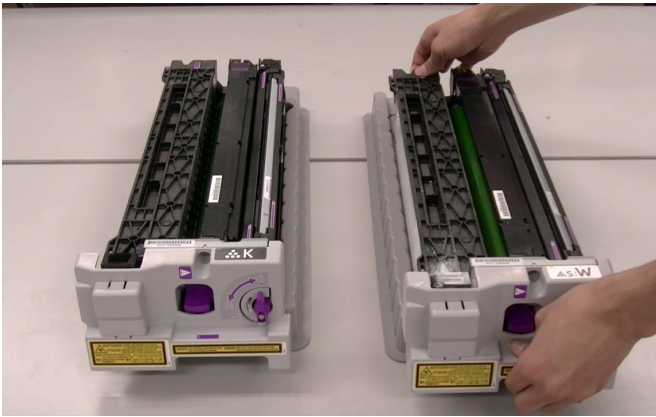
23. Carefully pull out White drum assembly from engine.



24. Remove from rails.

# CIP Training Pro C7200 series

## 5th Colour Position



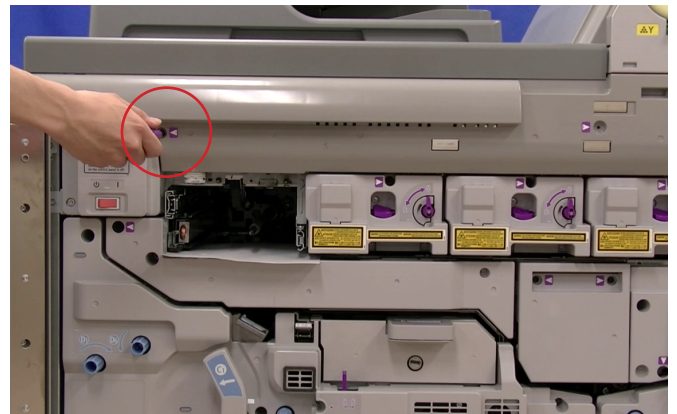
25. Place in second tray.



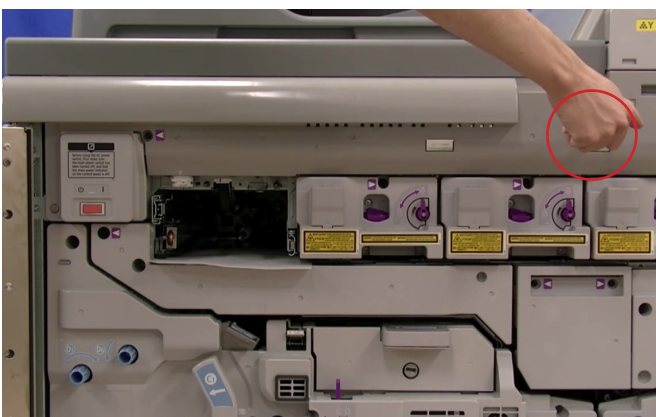
26. Slide rails back in to machine.



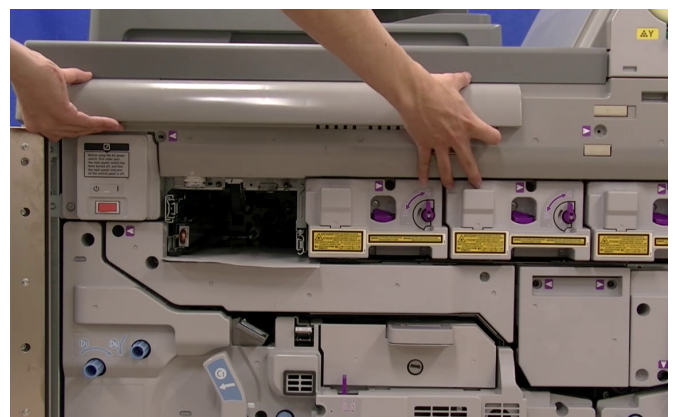
27. Open toner bottle cover.



28. Remove screw from upper cover (circled).



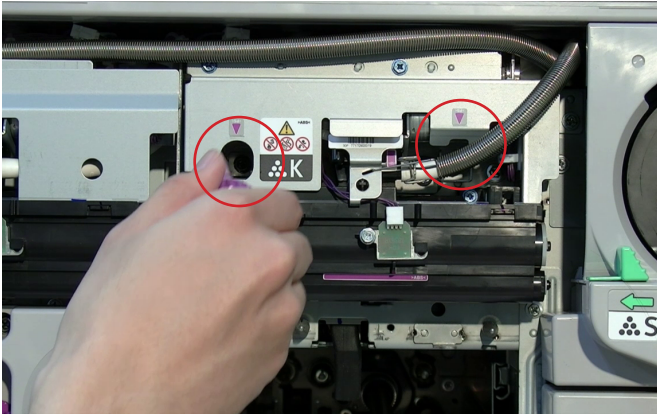
29. Remove screw from upper cover (circled).



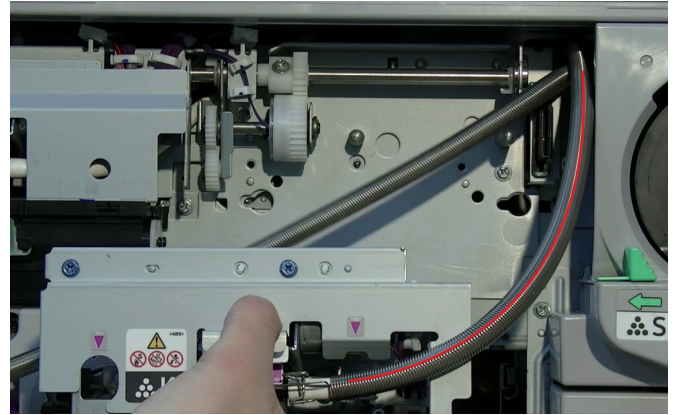
30. Remove upper cover.

# CIP Training Pro C7200 series

## 5th Colour Position



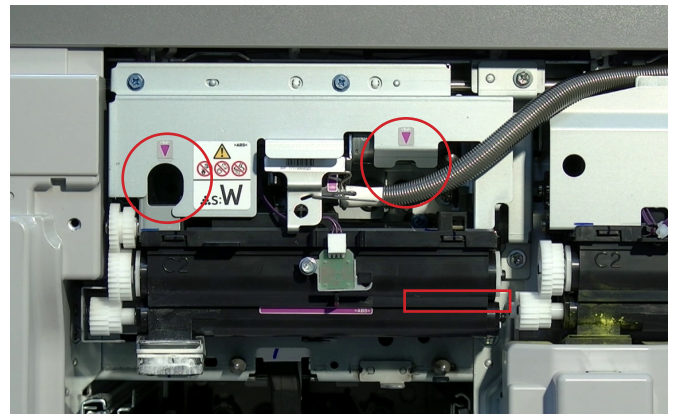
19. Remove two screws (circled) on K "hopper" unit.



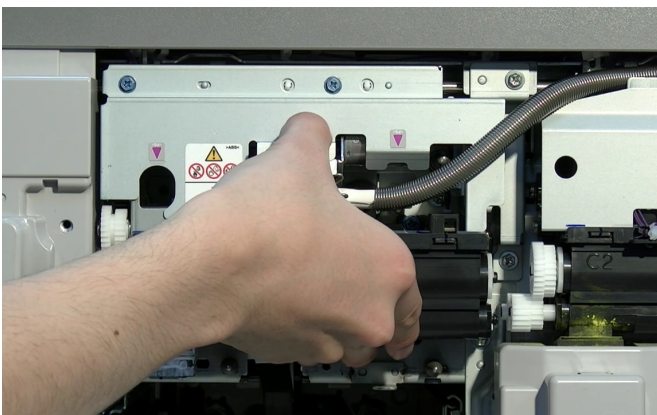
20. Carefully pull out K "hopper" unit. The highlighted spring tubing will feed out as you remove the unit.



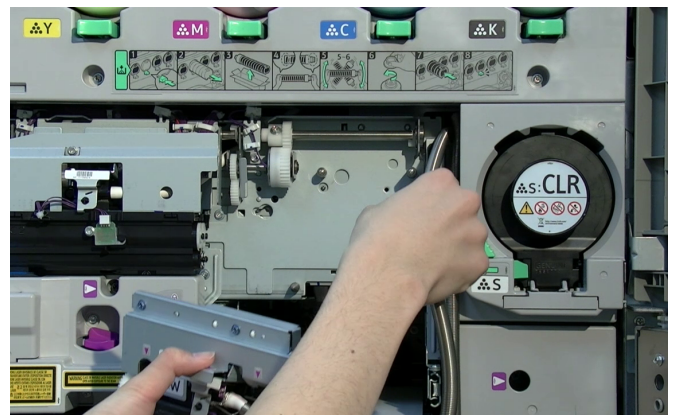
21. Hook K "hopper" unit on to the inside of the right front door.



22. Remove screws (circled) on White (5th) "hopper" unit.



23. Carefully pull out the White hopper unit.

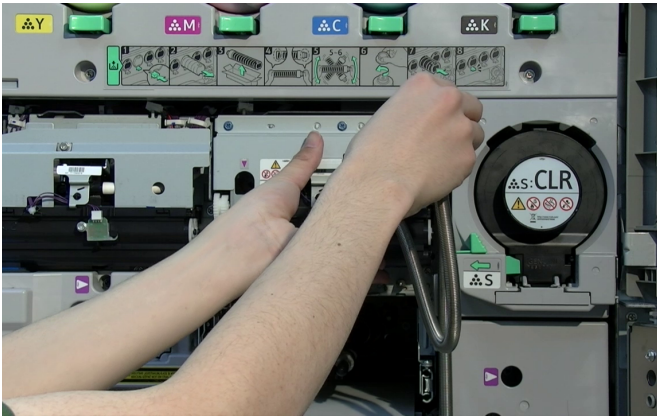


24. Place White (5th) hopper into the first position you have just removed K from. Replace two screws

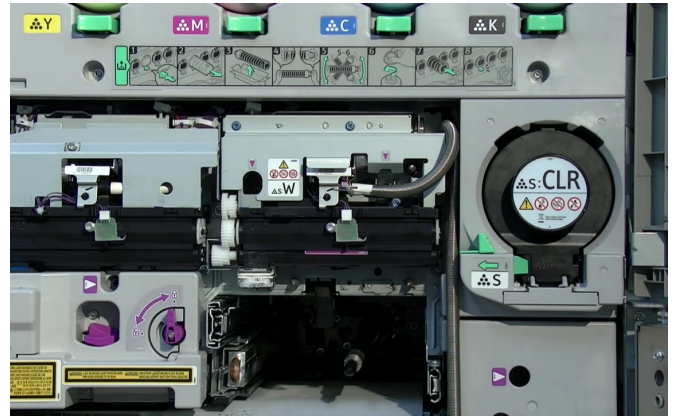


# CIP Training Pro C7200 series

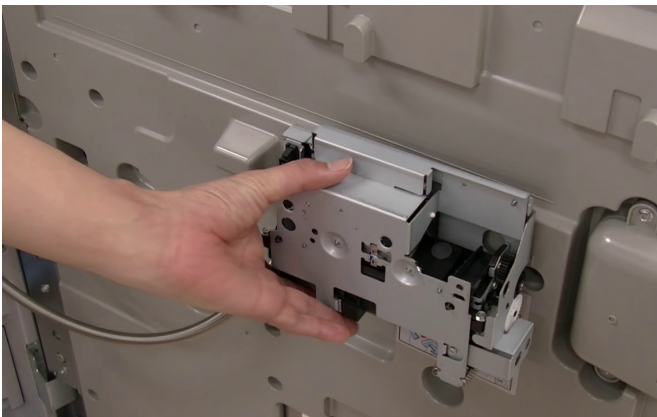
## 5th Colour Position



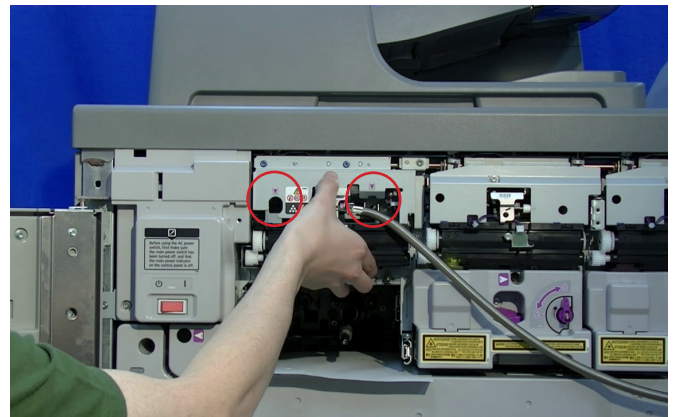
25. Carefully feed spring tubing in to machine.



26. Until it looks as pictured.



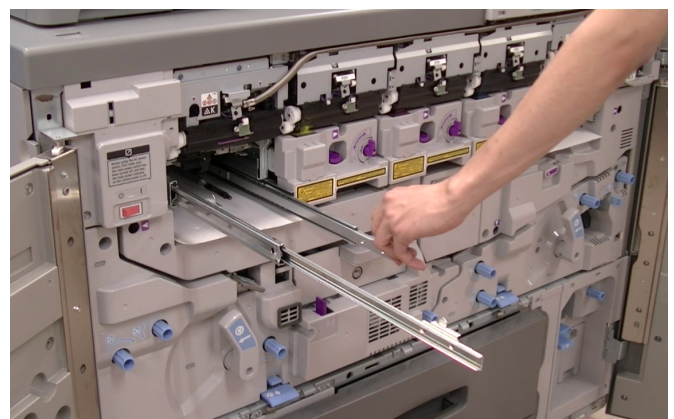
27. Remove K "hopper" from temporary holder on inside of door.



28. Place in 5th position and replace screws (circled).



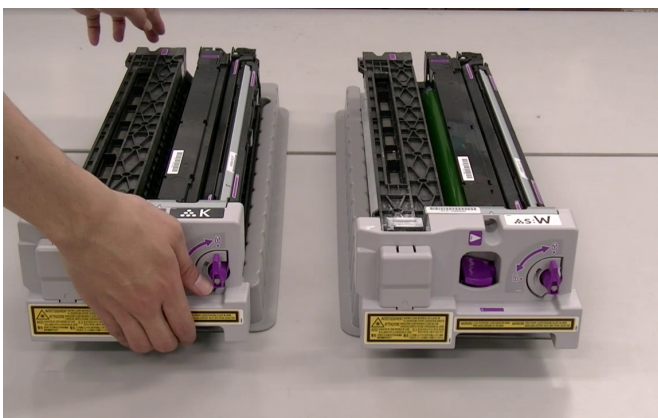
29. Feed spring tubing along path as pictured.



30. Pull rails out of 5th station.

# CIP Training Pro C7200 series

## 5th Colour Position



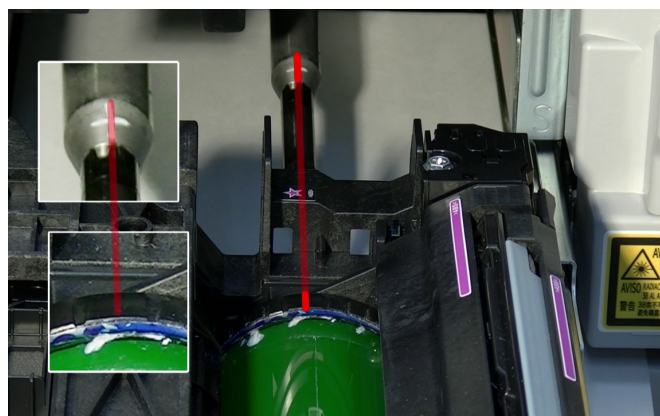
31. Remove K drum assembly from tray.



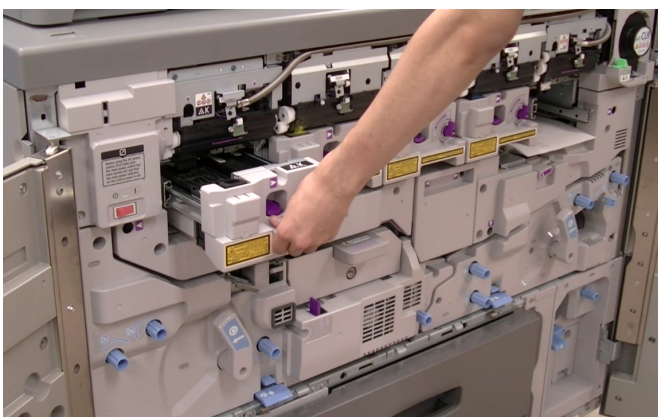
32. Carefully place on to rails, paying attention to holding pins (circled).



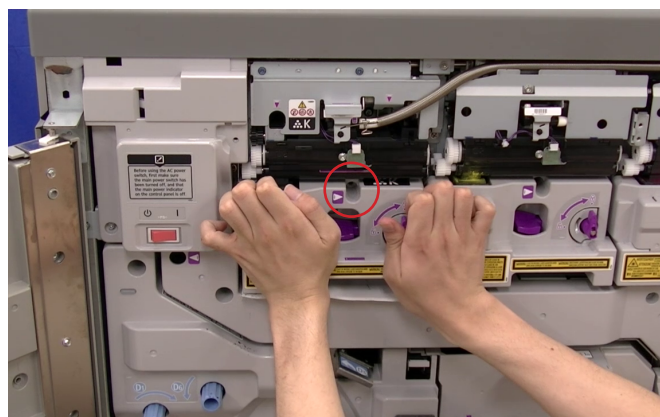
33. Carefully turn edge of drum till markings line up.



34. As pictured.



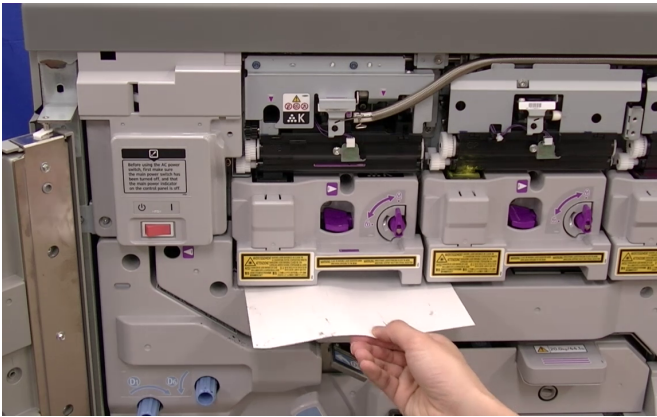
35. Slide drum assembly back in to place.



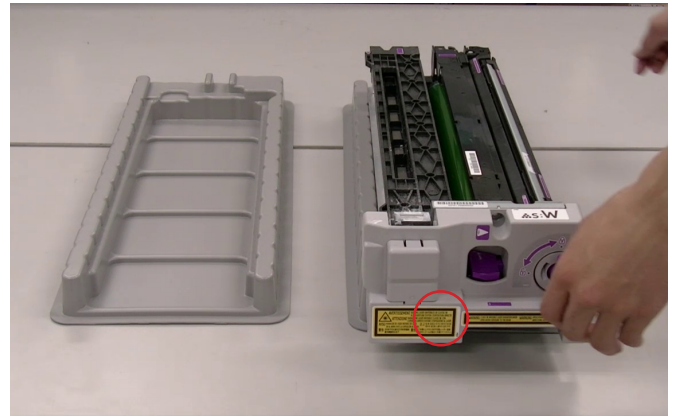
36. Push in to place until you hear the latch click in to place. Replace screw (circled).

# CIP Training Pro C7200 series

## 5th Colour Position



37. Remove paper.



38. Repeat steps 31 - 37 for White (now 1st station).



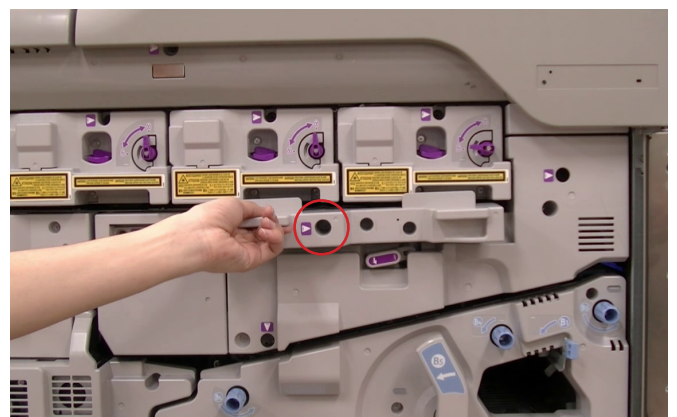
39. Replace upper cover.



40. Replace screws holding upper cover in place.



41. Close toner bottle cover.



42. Replace "cover plate" and screw to hold in place.

# CIP Training Pro C7200 series

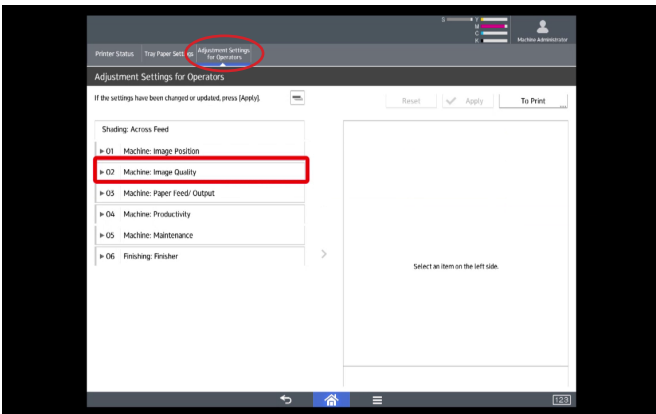
## 5th Colour Position



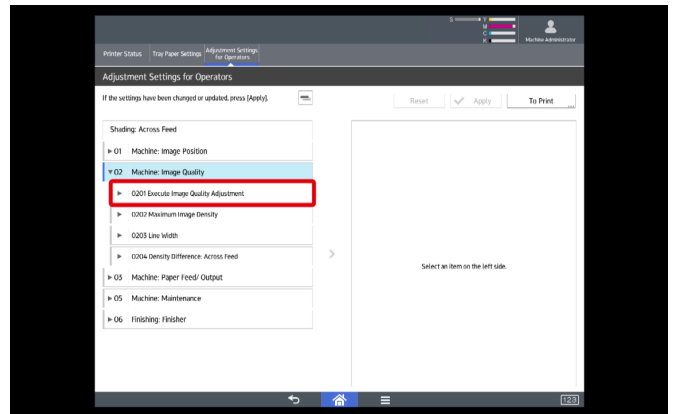
43. Turn latch to right and close front machine doors.



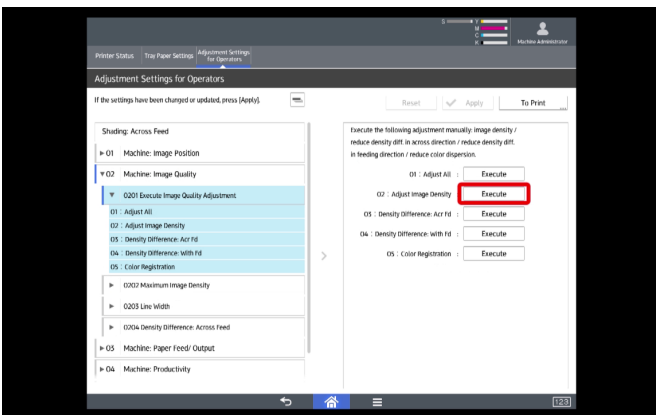
44. Power machine ON .



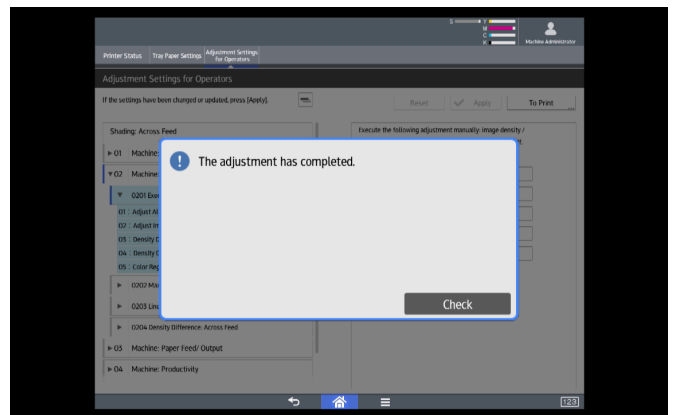
45. Select "Adjustment Settings for Operators" and then "02 Machine Image Quality".



46. Select "0201 Execute Image Quality Adjustment".



47. Select "Execute".



48. Once the adjustment has completed, select "Check".







**RICOH**  
imagine. change.